

Resources

SUMMER 2022

UPDATE

Nature Care

Become an Environmental Steward

As summer winds down, the Riverside-Corona Resource Conservation District is gearing up for new UC California Naturalist and UC Climate Stewards adult certification courses. The hybrid format combines a science curriculum with guest lecturers, in-person field trips, online classes, and project-based learning.

California Naturalist

The California Naturalist training explores the natural world of inland Southern California and the Santa Ana River watershed. Seven Thursday night classes run from September 8 to graduation (in-person) on Saturday, December 17. Information and registration can be found at rcrcd.org/california-naturalist-program. Registration is open through September 5.

Climate Stewards

The Climate Stewards training explores climate science and communication, trauma-aware practices, and social-emotional resilience. Hybrid classes run Wednesdays, 6 to 8 p.m. from October 5 through November 19 with field trips on October 8 and 22. More information can be found at rcrcd.org/california-climate-steward-course. Registration is due by October 1.



Classes include field trips to nature sites such as the Oak Glen Preserve.

© 2021 RIVERSIDE-CORONA RCD. ALL RIGHTS RESERVED PHOTO BY DANIA RUIZ



Fortino Morales, UCR's Sustainability Officer, spoke to the 2021 Climate Stewards class about water and food security at the campus community garden, R'Garden, which gets its irrigation from the Gage Canal.

Each course is \$275 with some scholarship opportunities. For scholarship and more information, please contact Erin Snyder at snyder@rcrcd.org or (951) 683-7691 ext. 207. To learn more about these classes, see: <https://calnat.ucanr.edu/> and watch a short video at <https://www.youtube.com/watch?v=IcLm8dnpCj4>.

Both programs provide continued training and volunteer opportunities as part of an ongoing Community of Practice (COP).

Volunteer Opportunities

Are you interested in helping at the native plant nursery, monitoring monarch butterflies, or being a docent? For more information about all our volunteer positions, please visit: rcrcd.org/volunteeropportunities.

Keep Trees Alive During Drought

During our hot, dry summers and into fall, trees need watering to keep them healthy and able to fight off disease, pests, and death.

Trees of the urban forest are essential for the multiple benefits they provide, including:

- cooling shade
- erosion and storm water control
- wildlife habitat
- buffers for dust, wind and sound
- oxygen to breathe
- higher property values

Trees do the important job of sequestering carbon from the air, providing for better health, and improving quality of life. Trees take decades to mature and cannot be quickly replaced as can a lawn or ornamental plants. Learn about simple ways to water trees to reduce stress in *Waterwise Tree Care*:

<https://www.rcrcd.org/files/ff1ba974d/WaterwiseTreeCare.pdf>

Help spread the word! Would you like a tag for a tree in your neighborhood? Stop by the LandUse Learning Center to pick up a free tag Friday through Sunday.



© 2022 RIVERSIDE-CORONA RCD. ALL RIGHTS RESERVED. PHOTO BY DIANA RUJ

Fall is Time to Think Native

Autumn is the time to start planning a native plant garden. Fall is also a good time to plant in preparation for our rainy season. To help with planning, renowned native plant landscape designer Orchid Black will speak on November 5 at 10 a.m. in Building F. It's free, but we ask that you wear a mask indoors.

The California Native Plant Society, in partnership with more than 100 California nurseries, has launched a new online resource: *Bloom! California* at <https://bloomcalifornia.org/>. Find great plant choices, locate nurseries that supply natives, and be inspired with ideas, tips, and tricks.

The UCR Botanic Gardens' plant sale, which includes natives, will be online October 9 with curbside pick up on October 18 and 20: gardens.ucr.edu/events/plant-sales.

Another great local resource is the Riverside - San Bernardino Chapter of the California Native Plant Society (CNPS). Find information about their field trips, programs, and fall plant sale here: facebook.com/CaliforniaNativePlantSocietyRiversideSanBernardino.

RCRCD Resources

Wildflowers and Important Native Plants of the Inland Empire offers gardening and identification tips. The book highlights more than 80 species and includes Native American, landscape, and wildlife uses. For more information, see rcrcd.org/books.

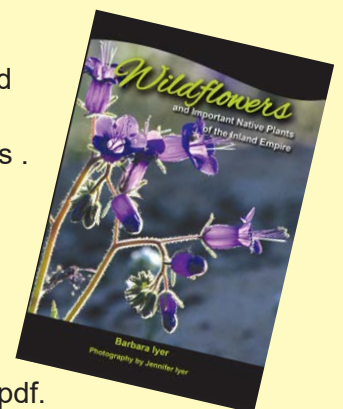
Pick up free copies or find online:

- *Wild About Natives*, rcrcd.org/files/da6576344/wildaboutNativesweb.pdf
- *Steps for Success with Milkweed and Monarchs*, rcrcd.org/files/65eb89ba5/2020_Monarch_Milkweed_for_SoCal.pdf
- *Plan Your Pollinator Paradise* (see next page and page 6 for nurseries and more resources) rcrcd.org/files/0415dff40/Pollinator+Garden+Handout+web.pdf.



Native Showy Penstemon, *Penstemon spectabilis* lives up to its name.

© 2022 RIVERSIDE-CORONA RCD. ALL RIGHTS RESERVED. PHOTO BY JENNIFER IYER





Plan Your Pollinator Paradise

This guide provides an example garden plan and resources for designing your own pollinator* garden for inland Southern California. For more inspiration, visit the demonstration Pollinator Garden at the Riverside-Corona Resource Conservation District’s LandUse Learning Center and see labeled, local native plants in the Native Habitat area.

Pollinators are in peril, and you can help.

1. Don’t use weed and bug killers.

These chemicals often have unintended consequences for other organisms. Most garden and lawn pest problems can be resolved with nontoxic alternatives.

2. Provide host plants and bee nesting sites.

Some butterflies and moths need specific “host” plants to feed on during their caterpillar (larval) stage. Plant host plants of pollinators that are native to inland SoCal. For example, our Western Monarch butterfly population has been in steep decline due to the loss of its host plant. You can help the Monarch by planting native narrow-leaf milkweed, *Asclepias fascicularis*.

Please make sure your milkweed is native. Do not grow tropical milkweed (*Asclepias curassavica*), since it may carry disease harmful to Monarchs.

Learn more in *Steps for Success with Milkweed and Monarchs* for Inland Southern California Valleys: www.rcrcd.org/files/65eb89ba5/2020_Monarch_Milkweed_for_SoCal.pdf

Unlike honeybees that form colonies, most of our native bees live individually with each female constructing her own nest. Native bees need either open, sandy soils; brush piles; snags (dead trees); or old tree stumps for nesting sites. Consider leaving some wild areas in your yard or supplementing nesting spots with “bee houses” or bundles of hollow plant stems.

3. Create wildflower-rich habitat in your own yard with local native plants.

Pollinators have evolved with native plants that are best adapted to the local growing season, climate, and soils. Most pollinators feed on specific plant types and species: hummingbirds sip nutrient-rich nectar from long, tubular flowers, while butterflies need smaller, more open-faced blooms.



Tropical Milkweed
Asclepias curassavica

© 2016 JLEE & ROWI NATURE PHOTOGRAPHY



Bumblebee on a Black Sage flower



Tarantula Hawk pollinating a Buckwheat plant.

Native plants are accustomed to growing with winter and spring rains, so group plants according to similar watering needs. Some native plants will die if given too much irrigation during their dormancy during hot, dry summers.

Wash hands immediately after handling milkweed.

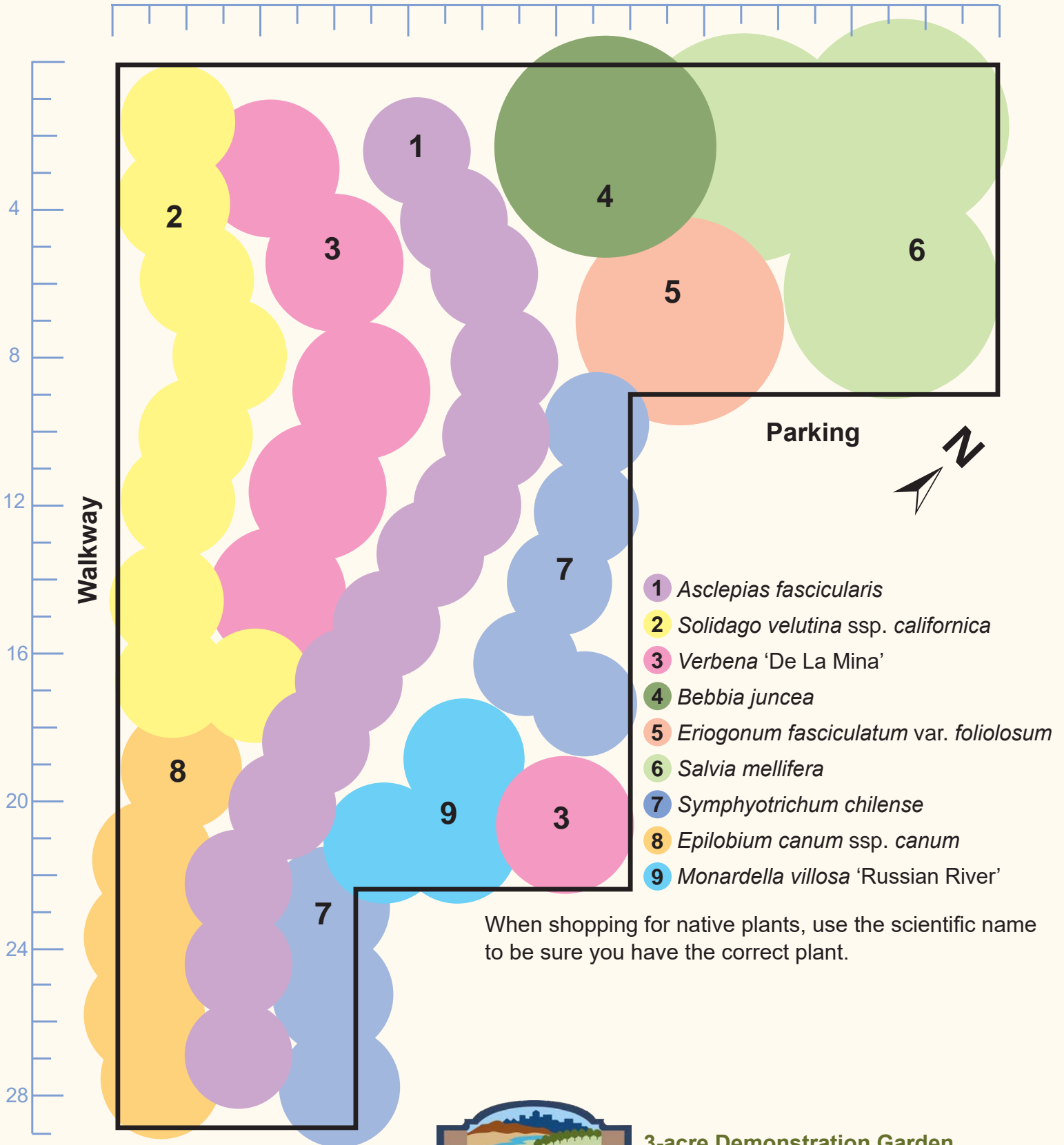
*When wind, water, insects or animals move pollen, the receiving plant is fertilized and can then produce full-bodied fruit and fertile seeds. Birds, bats, and flying insects, including butterflies, moths, bees, beetles, flies, and wasps, are attracted to flowers for food, then transfer pollen.

Native flowers Cream Cups and Gold Fields in top border. Photo © 2013 Jennifer Iyer

© 2012 JENNIFER IYER

© 2011 JENNIFER IYER

LandUse Learning Center Sample Pollinator Garden



1/4 inch = 1 foot

When shopping for native plants, use the scientific name to be sure you have the correct plant.



3-acre Demonstration Garden
Open Daily, 8 a.m. to 4 p.m.
4500 Glenwood Dr., Riverside, 92501

Pollinator Garden Plants



© 2022-RIVERSIDE-CORONA RCD. ALL RIGHTS RESERVED PHOTO BY ERNESTO ALVARADO

1 Narrow-leaf Milkweed
Asclepias fascicularis
Monarch butterfly host plant



© 2017 JOHN RUSK CC BY 2.0 WIKIMEDIA COMMONS

2 California Goldenrod
Solidago velutina ssp. *californica*



© 2022-RIVERSIDE-CORONA RCD. ALL RIGHTS RESERVED PHOTO BY ERNESTO ALVARADO

3 Verbena 'De La Mina'
Verbena lilacina



© 2022-RIVERSIDE-CORONA RCD. ALL RIGHTS RESERVED PHOTO BY ERNESTO ALVARADO

4 Sweetbush
Bebbia juncea



© 2003-RIVERSIDE-CORONA RCD. ALL RIGHTS RESERVED PHOTO BY ARLEE MONTALVO

5 Eastern Mojave Buckwheat
Eriogonum fasciculatum var. *foliolosum*



© 2022-RIVERSIDE-CORONA RCD. ALL RIGHTS RESERVED PHOTO BY ERNESTO ALVARADO

6 Black Sage
Salvia mellifera



© 2016 JOHN RUSK CC BY 2.0 WIKIMEDIA COMMONS

7 California Aster
Symphotrichum chilense



© 2022-RIVERSIDE-CORONA RCD. ALL RIGHTS RESERVED PHOTO BY ERNESTO ALVARADO

8 California Fuchsia
Epilobium canum ssp. *canum*



© 2014 JAMES GONSMAN CC-BY-NC 4.0 WIKIMEDIA COMMONS

9 Coyote Mint
Monardella villosa 'Russian River'



Resources

- You can find the best native plants to support butterflies and moths for your California region at *The Butterfly Net: Lepidoptera Conservation Tool*: ctcosma.shinyapps.io/the_butterfly_net/ . This tool helps find the best nectar plants, which provide resources for adult butterflies and moths as they pollinate, as well as the best host plants, which provide food for the caterpillars. After you input your location, a list of the top ten or more native plants for butterflies and/or moths will appear. To see the adult butterflies and/or caterpillars that the plant supports, click on the plant's name.

For example, here are some of the most commonly used plants by butterflies and moths for a five-mile radius near downtown Riverside:

Common Sunflower, *Helianthus annuus*

Deerweed, *Acmispon glaber* var. *brevialatus*

Common Yarrow, *Achillea millefolium*

Seep Monkeyflower, *Erythranthe guttata*

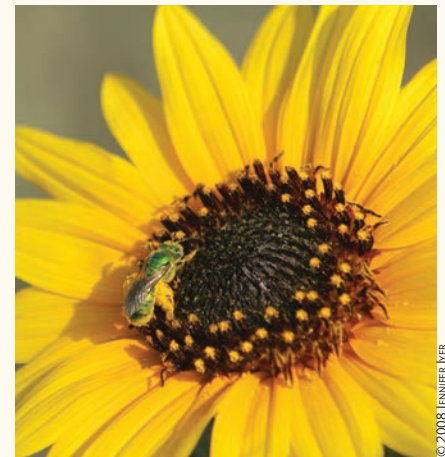
California Buckwheat, *Eriogonum fasciculatum*

Narrow-leaf Milkweed, *Asclepias fascicularis*

Western False Indigo, *Amorpha fruticosa*

Black Sage, *Salvia mellifera*

- Learn more about recommended plants for your locale at the California Native Plant Society's (CNPS) Calscape: www.calscape.org . Plants that are native are naturally adapted to our climate and, once established, most do not require watering to survive. Normally, they require less maintenance, fertilizers and pesticides. Try the Calscape Garden Planner to find appropriate native plants for your garden with just four questions at: <https://gardenplanner.calscape.org/>.
- Search for a larger list of plants that are also good for bees and fire safety at Calflora *What Grows Here?*: <https://calflora.org/entry/help/wgh-help.html>
- The Xerces Society: www.xerces.org/pollinator-resource-center
- Pollinator Partnership: www.pollinator.org



Sweat Bee on a Common Sunflower

Where to Buy Native Plants

El Nativo Growers, Azusa (626) 969-8449, www.elnativogrowers.com

Environmental Nature Center Native Plant Nursery, Newport Beach, (949) 645-8489, www.encenter.org

Fremontia Horticultural, Ontario, (909) 673-0600, www.fremontiahorticultural.com

Grow Native Nursery at California Botanic Garden, Claremont (909) 625-8767, www.calbg.org

Las Pilitas Nursery, Santa Margarita, (805) 438-5992, www.laspilitas.com

Moosa Creek Nursery, Valley Center, (760) 749-3216, www.moosacreeknursery.com

Theodore Payne Nursery, Sun Valley, (818) 768-1802, www.theodorepayne.org/

Tree of Life Nursery, San Juan Capistrano, (949) 728-0685, www.californianativeplants.com

CNPS Riverside-San Bernardino chapter plant sales:

www.facebook.com/CaliforniaNativePlantSocietyRiversideSanBernardino

Periodically, the Riverside-Corona Resource Conservation District (RCRCD) sells native plants and needs volunteers to help plant milkweed or monitor Monarch caterpillars. Follow www.facebook.com/RCRCD/ for upcoming opportunities or visit our website at www.rcrcd.org .



Published by the Riverside-Corona Resource Conservation District. • (951) 683-7691 • www.rcrcd.org

Environmental Education at Your Fingertips

RCRCD provides a variety of educational programs and services, including two educational sites, the LandUse Learning Center and Sycamore Creek Interpretive Center, plus free conservation education materials to schools, youth groups, and homeschooling families who live or work within our district boundaries. The District offers mini-grants to school and youth groups to help fund outdoor conservation projects such as gardens, tree plantings, and re-vegetation projects. Find order forms, applications, and additional educational resources on our website: www.rcrcd.com/#Education_Programs .

Free virtual programs include the *Power of Pollinators* and *Wonder of Water* for elementary students. Educators: For access to online lesson plans, videos, resources and curriculum, please contact Jenny Iyer at Iyer@RCRCD.org or (951) 683-7691, Ext. 226. Learn about these and our other educational programs at: youtube.com/channel/UCZ9qcZKB2xePvErzAbsCZuQ/videos .



© 2022-RIVERSIDE-CORONA RCD. ALL RIGHTS RESERVED.



© 2022-RIVERSIDE-CORONA RCD. ALL RIGHTS RESERVED.

Envirothon students measured tree diameter as part of the forestry competition.

Fun Learning for High Schoolers

Groundwater, invasive species, urban waste, and macroinvertebrates; what do these have in common? The Envirothon teaches about these natural resource topics and much more. The Envirothon is a hands-on program for high school students, grades 9-12. Students study during the year, then join with participants from all over California to compete in five disciplines: Forestry, Wildlife, Aquatics, Soils, and a current topic. Students are challenged to answer written questions and then work as a team to develop and present on a current environmental topic. The topic for 2023 is *Adapting to a Changing Climate*.

RCRCD offers training and resources to help prepare students for the spring California competition. Find out more at: caenvirothon.com, envirothon.org, facebook.com/groups/146717035350309, or contact Erin Snyder at Snyder@RCRCD.org and (951) 683-7691, ext. 207.

Agents of Discovery

New at Sycamore Creek Interpretive Center

Looking for a new way to get your kids to interact with the outdoors? Do they always seem to be on their phones?

Agents of Discovery combines the two with its educational augmented reality app that allows anyone with access to a smart phone to delve into the world of secret agents and embark on place-based environmentally-centered missions at parks, museums and other locations all over the world.

Secret agent missions are coming to our Sycamore Creek Interpretive Center in the Temescal Valley thanks to a generous grant from Southern California Edison.

The first mission will help celebrate Smokey Bear's 78th birthday this summer. The Smokey Bear Mission focuses on fire and urban wildland interface. Prizes can be claimed at the center during normal business hours. For more information see rcrcd.org/sycamore-creek-interpretive-center, or facebook.com/SCICTV.

AGENTS: If you decide to accept this mission, download the Agents of Discovery app and begin today!





**Riverside-Corona
Resource Conservation District**

4500 Glenwood Drive
Building A
Riverside, CA 92501
(951) 683-7691
www.rcrcd.org
www.facebook.com/RCRCD

NON-PROFIT
U.S. POSTAGE
PAID
RIVERSIDE
CALIFORNIA
PERMIT NO. 944

BOARD OF DIRECTORS

Alfred B. Bonnett President
Carol Bartels Treasurer
Carl Pongs Director
Sean Mill Director

STAFF (951) 683-7691

Shelli Lamb Ext. 202
District Manager

Diana Ruiz (909) 238-8338
Public Affairs Manager

Kerwin Russell Ext. 203
Natural Resources Manager

Erin Snyder Ext. 207
Senior Resource Educator

Shani McCullough Ext. 204
Senior Plant Restoration Specialist

Brett Mills Ext. 224
Biological Resources Specialist

Jose Iniguez Ext. 208
Resource Conservation Field Coordinator

Jennifer Iyer Ext. 226
Resource Educator

John Dvorak Ext. 217
Senior Conservation Biologist

Ernesto Alvarado Ext. 215
Native Plant Nursery Manager

Ariana Firebaugh Ornelas Ext. 223
Conservation Project Manager

Rene Lopez Ext. 205
Field Technician

Simon Lopez
Field Assistant

Alex Patalano
Field Assistant

Tevin Bui
Resource Conservation Technician

Alicia Ruan
Resource Conservation Technician

Matt Klohn
Facility Maintenance Worker

Michele Felix-Derbarndiker Ext. 218
Naturalist-SCIC

**NATURAL RESOURCES
CONSERVATION SERVICE**

Bob Dunkle (951) 654-7933

UPCOMING EVENTS

LandUse Learning Center

Open 7 days a week, 8 a.m. - 4 p.m. Closed holidays.



Ask a Master Gardener 9 a.m. - noon
First Saturdays of each month

First Saturday Speaker Series

October 1, 10 a.m. *Fruit Tree Pruning Workshop*
Tom Spellman of Dave Wilson Nursery. Hands-on: bring tools, gloves, etc. Free

November 5, 10 a.m. *Landscaping with Native Plants*
Orchid Black, Landscape Designer and California Native Plant Society. Building F. Please wear a mask. Free

November 5, 12:30 p.m. *Native Plant Wreath Workshop*
Ernesto Alvarado, RCRCD Nursery Manager. Registration and payment link coming soon. Building F. Please wear a mask.

December 3, 10 a.m. *Tree Pruning: How not to get clipped.*
Raquel Falco, Inland Urban Forest Council Chair and Parks Supervisor, City of Glendora. Free <https://inlandurbanforestcouncil.org/project/pruning/>

UC California Naturalist Training (See article page 1)
Thursday Eves, Saturday field trips, September 8 - December 17

UC Climate Stewards Training (See article page 1)
Wednesday Eves, Saturday field trips, October 5 - November 19

Forestry Challenge

A high school competition by Forestry Educators Inc.
November 9-12, Register now for 2022: forestrychallenge.org/san-bernardino-info/ .

UCR Botanic Gardens' Fall Plant Sale

Members: October 8 • Public: October 9, 6 a.m. to midnight.
Virtual sale with in-person pick-up. gardens.ucr.edu/events/plant-sales.

Master Gardener Virtual Workshops

<https://www.wmwd.com/539/Master-Gardener-Workshops>



Sycamore Creek Interpretive Center

Hours and information at facebook.com/SCICTV

All RCRCD programs and services are offered on a nondiscriminatory basis, without regard to race, national origin, religion, age, gender, or orientation.

You can help prevent waste by recycling this publication, passing it on to a friend, or sign up to our e-newsletter here: <https://www.rcrcd.org/click-here-to-subscribe-to-our-newsletter> . To unsubscribe contact iyer@rcrcd.org or (951) 683-7691, ext. 226.