

# Resources

U P D A T E

## Climate Steward Training

Would you like to feel empowered to help reduce the impacts of climate change? The UC Climate Stewards certification course combines a science curriculum with field trips and project-based learning.

Learn about climate science and communication, plus planning for climate change impacts, trauma-aware practices, and social-emotional resilience. RCRCD will conduct the training from June 3 to August 21, 2021 on Thursday nights from 6-8 PM, plus two Saturday field trips.

Find out more: <https://www.rcrcd.org/climate-steward-2021-course-flyer>.

**Registration is open through May 28, 2021.**



PHOTO COURTESY OF USFWS NATIONAL DIGITAL LIBRARY



This Western Diamondback rattlesnake is ready to strike.

## Rattlesnake Avoidance for Dogs

Help your dog learn lifesaving skills at "Rattlesnake Avoidance Training for Dogs" in June. The class will be outdoors, scheduled individually, and all COVID-19 guidelines will be followed.

For the Sycamore Creek Interpretive Center on **June 5**, schedule your training with Michele at [SCIC@rcrcd.org](mailto:SCIC@rcrcd.org) - (951) 683-7691 Ext. 218.

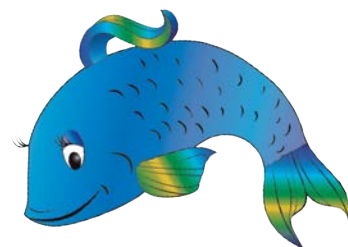
For the LandUse Learning Center on Saturday **June 26**, schedule your training with Erin at [snyder@rcrcd.org](mailto:snyder@rcrcd.org) - (951) 683-7691 Ext. 207.

The dog training costs \$85 and is conducted by Snakeworx.

## Teachers, Parents and Students!

*What about Water?* is a new, online educational program. It includes examples of hands-on activities, citizen science projects, information about our Santa Ana Watershed, and a variety of water-related resources. Watch to learn more:

<https://www.youtube.com/watch?v=vwZvfI9M3og&t=6s> . If you would like a link to the online class, please contact Resource Educator Erin Snyder at [snyder@rcrcd.org](mailto:snyder@rcrcd.org). This program was made possible by a Learning Landscapes grant from the Alliance for Water Efficiency.



Fancy Fin teaches how to keep water clean.

# Northside Open House

Join us to help launch the Northside Heritage Meadows (NHM) project! We want to hear from you if you have growing or other skills to share about food, sustainability and community. Once the Project is built, we will have a community space for growing and learning, but we can't do it without community! If you're not involved, but would like to be, please contact the RFSA at [RiversideFoodSystems@gmail.com](mailto:RiversideFoodSystems@gmail.com), or call (951) 312-4031.



## What is NHM?

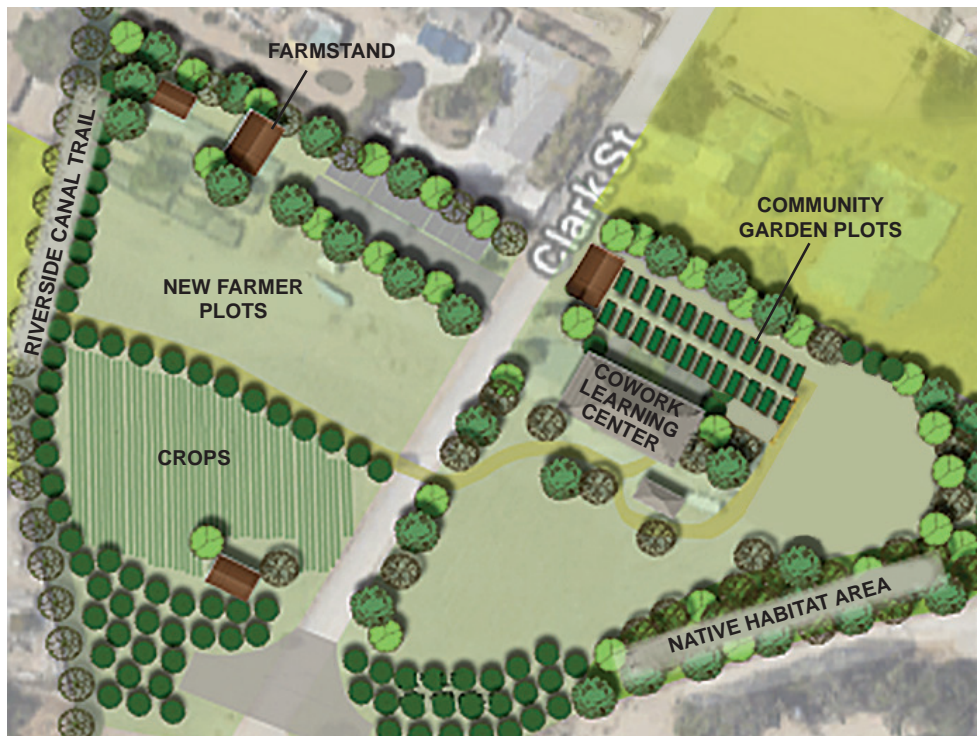
The California Natural Resources Agency awarded \$3 million to the City of Riverside to convert 7.5 acres into an urban greening site and agriculture training center that will include:

- a community garden
- beginner farmer training fields
- demonstration orchards
- a composting area
- two trails that will reduce vehicle-miles traveled and the related pollutants
- 450 trees and shrubs that will capture carbon to help slow climate change.

Find a short video and more about the project and the Riverside Food Systems Alliance here:

<https://riversidefoods.org/projects/> .

The NHM project will improve air and water quality, increase wildlife habitat, and provide healthy, locally grown food for an area that is currently considered a “food desert,” with no nearby grocery.



The Project is a collaboration of the City of Riverside, the Northside community, the Riverside Food Systems Alliance (RFSA), the Riverside Garden Council, RCRC, plus local groups, agencies, and individuals like yourself. If you are interested in getting involved with this important project, please join us for the first site visit at 900 Clark Street on **June 24, 2021. Drop in between 5:30- 7:30 PM.** Please park along Clark Street and wear a mask. The event will be outdoors and socially distanced.

You may also wish to follow the project's progress at the Facebook page: [Northside Heritage Meadows Community](https://www.facebook.com/groups/251927775049264) or <https://www.facebook.com/groups/251927775049264> .

## Welcome Spring!

After being cooped up for the past year, we are especially enjoying opening up in time to share spring blossoms at the LandUse Learning Center (LLC). The LLC is now open 7-days a week from 8 AM to 4 PM.

If no one is available at the small entry building, please sign in at our main office in Building A. Entry is free.

Pick up plant lists to help identify your favorite plants. Plants are labeled. Be introduced to the LLC by watching this short video:<https://www.youtube.com/watch?v=fNjFD2e0GM4> .

Do you have questions about gardening? “Ask a Master Gardener” will resume again at the LLC on the first Saturday of the month starting June 5 from 9 am to noon.



Start the trail at the Native Habitat Area at the LandUse Learning Center.



## Signs of the Times

RCRCD helped the City of Riverside restore a rare alkali meadow along the Tequesquite Arroyo at Ryan Bonaminio Park. Just before the pandemic hit, we were able to create eight interpretive signs that explain the project, depict the watershed, and solicit help in stewarding the meadow with its salt-adapted plants. If you haven't already, try taking a stroll around the park's 1-mile long trail to see the signs and discover the uniqueness of the area. You will also learn about ways to reduce impacts on waterways, water quality, and wildlife.

## UC California Naturalists

Congratulations to the Cal Nat Class of 2021! With COVID restrictions, this was the first time RCRCD had conducted a class virtually. Students were able to take field trips individually or watch them remotely. Restrictions were lifted in time for the final meeting, and we were able to host the graduation outdoors at the LandUse Learning Center. It was wonderful meeting nine of our graduates in person.

Graduates include:

Ariana Arestegui	Spencer Moore
Casey Escutia	Tracy Nolan
Kevin Francis	Heather Rice
Allison Fry	Joel Roney
Joshua Gardener	Alisa Slaughter
Lauren Hamlett	Irene Stewart
Molly Heal	Monica Tydlaska
Darrell K. Moore	Janice Zieke



Back row: Joshua Gardener, Kevin Francis, Spencer Moore, Darrell Moore  
Front row: Ariana Arestegui, Lauren Hamlett, Janice Zieke, Irene Stewart, Erin Snyder (instructor), Alisa Slaughter

# Help Save the Monarch Butterfly

## Mayor's Monarch Challenge 2021

RCRCD is helping the City of Riverside to complete the requirements for the Mayor's Monarch Pledge during 2021. Mayor Patricia Locke-Dawson and staff have taken on the challenge and will be working to improve Monarch habitat, as part of the National Wildlife Federation program.

Want to help Monarch Butterflies? You can help the butterfly by planting our native milkweed *Asclepias fascicularis*, narrow-leaf milkweed, and by sharing information to help raise awareness. Milkweed is the "host plant" on which the Monarch lays its eggs. The caterpillars then grow from the eggs and eat the plant. More information is at *Steps for Success with Milkweed and Monarchs for Inland Southern California Valleys*  
[https://www.rcrcd.org/files/65eb89ba5/2020\\_Monarch\\_Milkweed\\_for\\_SoCal.pdf](https://www.rcrcd.org/files/65eb89ba5/2020_Monarch_Milkweed_for_SoCal.pdf) .

Keep an eye out for social media posts to share with others.

You may also like to collect data for studying the butterfly with the *Western Monarch Milkweed Mapper* app:  
<https://www.monarchmilkweedmapper.org/> .



This Western Monarch butterfly caterpillar is feeding on Narrow-leaf Milkweed, *Asclepias fascicularis*.



## NEW: Power of Pollinators

RCRCD has created an online, educational program for youth called the *Power of Pollinators*. Here's a short video about the free program:  
<https://www.youtube.com/watch?v=OI4OKwIMOiw&t=11s> .

To request a link to the class, please contact Naturalist Michele Felix-Derbarmdiker at [Felix-Derbarmdiker@rcrcd.org](mailto:Felix-Derbarmdiker@rcrcd.org) .

RCRCD partnered with the Southwest Resource Management Association (SRMA) to create the virtual curriculum. Many thanks to the Environmental Education Collaborative that provided a \$2,000 mini-grant. And thanks to the Wildlife Conservation Board and the California Association Resource Conservation Districts for additional funding.

## Conserved Habitat

In spite of the pandemic, RCRCD staff continued with its important habitat work. Since the projects are outdoors, our staff was able to monitor over 60 active conservation projects and conduct species counts for the Least Bell's vireo, California Gnatcatcher and native fish. Invasive plants and animals were removed, and lands were preserved for native plants and animals.



Habitat preservation is needed for the threatened Santa Ana Sucker.



Ernesto Alvarado planted milkweed and nectar plants at RCRCD's Greenbelt Farm.

## Working to Save Monarchs

RCRCD is in the process of planting 2-acres of Monarch habitat, thanks to a grant from the Wildlife Conservation Board, via the California Association of Resource Conservation Districts. Ernesto Alvarado, our native plant specialist has been collecting seed and propagating narrow-leaf milkweed for the project. Check out this video about the Monarch and how Ernesto grows milkweed: <https://www.youtube.com/watch?v=hcl6mL-vUw&t=20s> .

Additionally, plants that provide nectar for the adult butterfly will be established with the milkweed in the 2-acre plot at RCRCD's Greenbelt Farm.

## Polaris for Pollinators!

The Inland Empire Chapter of the Public Relations Society of America (PRSA) recognized RCRCD with a prestigious Polaris award for leading the 2020 effort to help save pollinators.

Together with numerous community and national partners, RCRCD orchestrated a city-wide initiative that included a Pollinator Festival, habitat plantings, and an awareness campaign. Concurrent to the festival, the California Native Plant Society sold native plants, including Narrow-leaf Milkweed.



## Celebrate Pollinator Week with Us! June 21- 27, 2021

Visit <https://www.pollinator.org> for a variety of activities and ideas on how you can help.

## Farming and Pollinators

Growers can help support beneficial insects, including pollinators, by planting hedgerows along field edges. See an example hedgerow that is planted along the fenceline of the Ag Area at the LandUse Learning Center. Find native species to plant and more in the publication: *Planting a Hedgerow for the SoCal Inland Region* at <https://www.rcrcd.org/files/4bab03892/Hedgerow.pdf> .



# What Would We Do Without Our Volunteers?

Although COVID did slow down our volunteer projects, it did not stop them!

## Bluebird Nestbox Monitoring Program

Thanks to volunteers Charlie Foust, Lee Johnson, and Linda Chappell, the bluebird nest box monitoring program continued during 2020 nesting season. Their records show that 71 Western Bluebirds and 12 Bewick's Wrens fledged from 16 nest boxes.

## New Partners: Claremont Colleges

Thanks to the help of Professor Susan Phillips representing Pitzer College and the Robert Redford Conservancy, we were able to meet professors and students who worked on projects remotely. We are grateful for the efforts of GIS Professor Brian Hilton and his students who assisted RCRCD with mapping projects.

Claremont Graduate University students Gloria Miranda and Dominic Lee completed an interactive map for *Environmental Learning Resources*, a guide that helps people find environmental education sites and programs in San Bernardino and Riverside counties. Through the traffic feature of the searchable online map, visitors can better plan trips for outdoor explorations and environmental programs.

Undergrads Hannah Cho of Scripps College and Ally So of Claremont McKenna College completed *storymaps* that will soon be on the RCRCD's website. One is a self-guided tour of the LandUse Learning Center and the other highlights a few of RCRCD's conservation projects and sites. We greatly appreciate

the efforts of these students and professors who are helping to create a more sustainable inland southern California.

**Robert Redford  
CONSERVANCY**  
for Southern California Sustainability  
**PITZER COLLEGE**

## Master Gardeners

A big thank you to our Master Gardeners who will resume volunteering their expertise on the first Saturday of the month starting in June (see page 3).

## New Media Content

Many thanks to Barbara and Jenny Iyer for their donation of time creating native plant videos. Jennifer Iyer Video Productions provides videos for local nonprofits at a reduced rate.



Volunteer Ed Harrison created a "Little Free Library" that looks like a historic weather station with gauges. We recognized Ed for his extensive volunteerism last year in our newsletter.



A big shout out to Girl Scout troop 1159 for repurposing old tires into planters at our Sycamore Creek Interpretive Center.

## Want to Volunteer?

If you would like to volunteer your time, such as by teaching others about sustainability as a docent at the LandUse Learning Center, please contact Erin Snyder at [snyder@rcrcd.org](mailto:snyder@rcrcd.org) or (909) 683-7691, ext. 207. Docent training will be provided at no cost.

# Thank You John Gless, for 32 Years!

Local grower John Gless served on our Board of Directors from 1988 to 2021. We thank him for his decades of service to RCRCD and for his leadership conserving local natural resources.

## Gless Ranch History

In 1958, John J. Gless and Janet McCandless were married and together they began what today is known as Gless Ranch. John planted the couple's first orange grove by himself. In 1960 he pioneered citrus farming in the Woodcrest area on acreage that had been deemed unsuitable. By the 1970's, numerous other farmers had joined in farming citrus in the Woodcrest area.

In 1977, John and Janet revisited an old idea: to sell by the roadside. This time their four kids would help. John S., Betsy, Jeff, and Jason began selling their oranges out of a 1974 Ford station wagon. With this start, the original "fruit stand" was born.

Today, in addition to oranges, the Gless Ranch farms grapefruit, tangerines, limes, lemons, dates, avocados and figs in Riverside, Kern County, and the Coachella Valley. The Gless family has also



John and Janet Gless with a vintage tractor at the present day Gless Ranch Farmer's Market (prior Gless Ranch farmstand).

established a state of the art tree nursery where varieties of avocado and citrus trees are propagated and sold to other farmers.

John and Janet are pleased to have all four of their children, as well as several grandchildren involved with the farming and operation of Gless Ranch.



In 2017, the original fruit stand was renovated into the Gless Ranch Farmer's Market at Van Buren Boulevard and Barton Road. Besides the freshest citrus plus many varieties of locally grown fruits and vegetables, the market offers craft beer, wine, specialty items, and artisan foods.

## Support Local Ag

Check out the current news of the Riverside Food Systems Alliance at: <https://riversidefoods.org/wp-content/uploads/rfsa-newsletter-spring-2021-web.pdf> .

If you are interested in local food and agriculture, you can sign up for their newsletter at the new website: <https://riversidefoods.org/>. Find out where to buy local foods in the *Fresh and Local* guide at <https://riversidefoodS.org/find-food/> .





**Riverside-Corona  
Resource Conservation District**

4500 Glenwood Drive  
Building A  
Riverside, CA 92501  
(951) 683-7691  
(951) 683-3814 FAX  
Web site: <http://www.rcrcd.org>  
Facebook: [www.facebook.com/RCRCD](http://www.facebook.com/RCRCD)

NON-PROFIT  
U.S. POSTAGE  
**PAID**  
RIVERSIDE  
CALIFORNIA  
PERMIT NO. 944

**BOARD OF DIRECTORS**

**Alfred B. Bonnett** President  
**Roy Takeno** Vice-President  
**Carol Bartels** Treasurer  
**Carl Pongs** Director  
**Sean Mill** Director

**STAFF (951) 683-7691**

**Shelli Lamb** Ext. 202  
District Manager  
**Diana Ruiz** (909) 238-8338  
Public Affairs Manager

**Kerwin Russell** Ext. 203  
Natural Resources Manager

**Erin Snyder** Ext. 207  
Sr Resource Educator

**Shani Pynn** Ext. 204  
Habitat Restoration Specialist

**Brett Mills** Ext. 224  
Biological Resources Specialist

**Jose Iniguez** Ext. 208  
Resource Conservationist

**Erika Presley** Ext. 223  
Resource Conservationist

**John Dvorak** Ext. 217  
Plant Materials Assistant

**Ernesto Alvarado** Ext. 215  
Native Plant Nursery Assistant

**Tawny Hoemke** Ext. 215  
Resource Assistant

**Rene Lopez** Ext. 205  
Field Technician

**Michele Felix-Derbardmiker** (951) 277-0219  
Naturalist-SCIC

**NATURAL RESOURCES  
CONSERVATION SERVICE**

**Bob Hewitt** (951) 654-7933  
District Conservationist

All RCRCD programs and services are offered on a nondiscriminatory basis, without regard to race, national origin, religion, age, gender, or orientation.

Welcome to Sean Mill, our new board member, who replaced John Gless (see page 7).

**Sycamore Creek Interpretive Center**



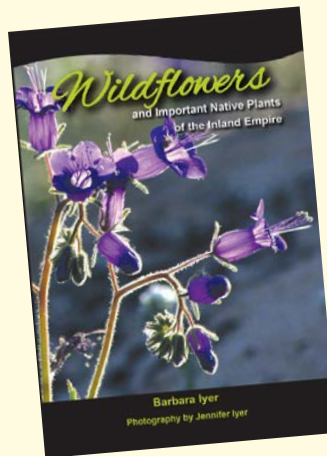
Our Sycamore Creek Interpretive Center will begin programming in June, but with no hands-on components. Get a glimpse of the Center with this short video: <https://www.youtube.com/watch?v=z1vyiY9f75Q&t=10s>.

**Timing is Everything**

Speaking of habitat, it's nesting season and a dangerous time (for wildlife) to be pruning trees. Always check first for nesting birds and other wildlife. Watch short videos to learn about proper tree pruning and find the publication: *A Practical Guide to Tree Pruning - How Not to Get Clipped* at the Inland Urban Forest Council's website: <https://inlandurbanforestcouncil.org/project/pruning/>.



**Learn Local Wildflowers**



*Wildflowers and Important Native Plants of the Inland Empire* by Barbara Iyer, with photos by Jennifer Iyer, is available for purchase at our front desk in Bldg A. Get an introduction to a variety of native plants with short videos at RCRCD's YouTube channel at: <https://www.youtube.com/channel/UCZ9qcZKB2xePvErzAbsCZuQ/videos>. See Barbara introduce sunflowers, brittlebush, sagebrush, monkeyflowers, buckwheat and penstemon.

You may also like to follow the Facebook page with the same name: <https://www.facebook.com/groups/199762318119825>.